

The University of Washington is a globally recognized leader in sustainability. That leadership is only possible through the dedication and work of many different campus departments, academic units and other groups.

UW Sustainability connects all these efforts and coordinates data collection for reports, including the Association for the Advancement of Sustainability in Higher Education (AASHE) Sustainability Tracking Assessment & Rating System (STARS).

UW Sustainability recognizes our campus department 'All-STARS' who advance the university's sustainability goals. UW Sustainability facilitates collaboration by regularly connecting the All-STARS network for discussions about existing initiatives and possible improvements.

# UW ALL STARS

Streamlining reporting, improving performance, creating synergies to advance sustainability at the University of Washington



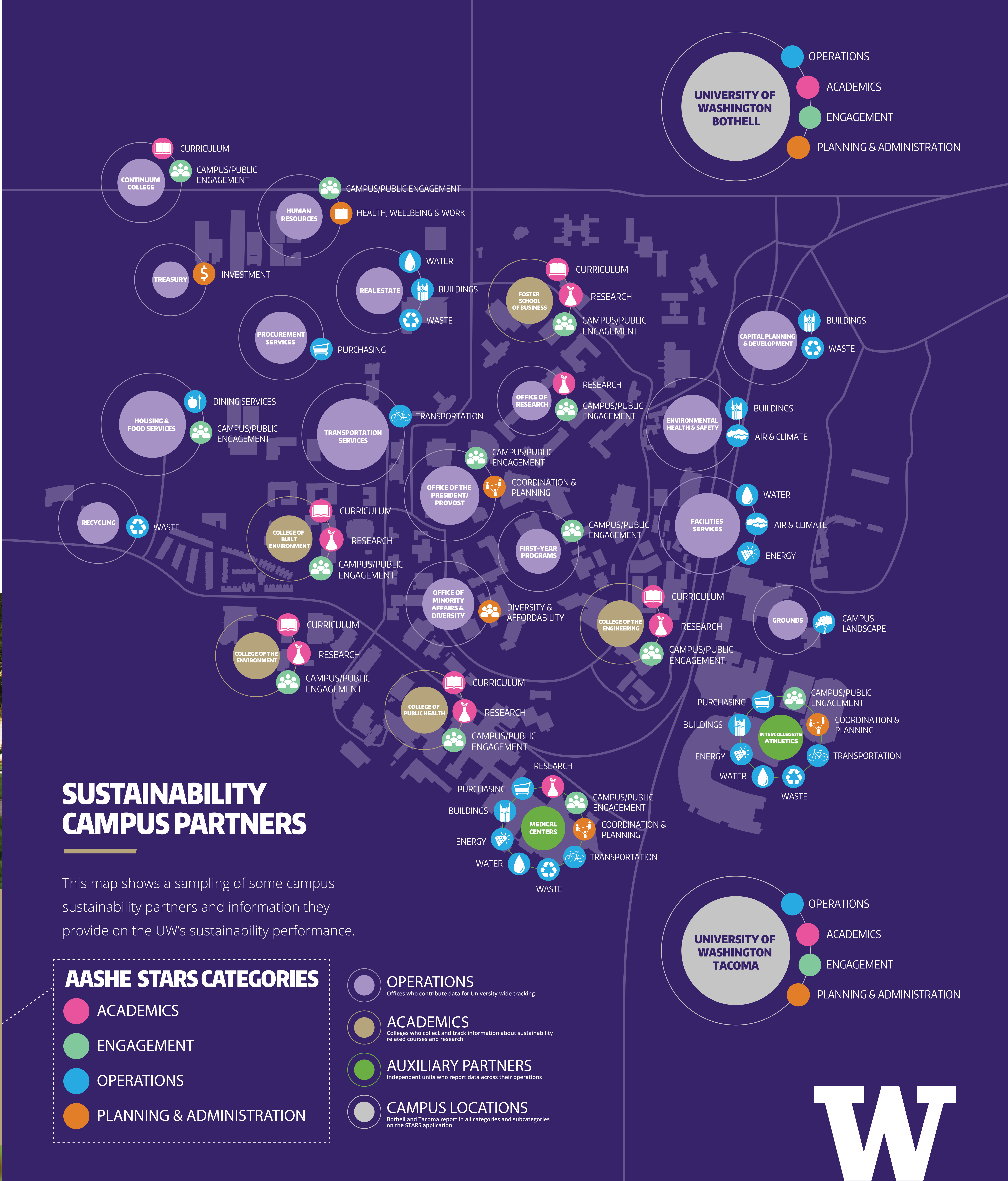
## SUSTAINABILITY CAMPUS PARTNERS

This map shows a sampling of some campus sustainability partners and information they provide on the UW's sustainability performance.

### AASHE STARS CATEGORIES

- ACADEMICS
- ENGAGEMENT
- OPERATIONS
- PLANNING & ADMINISTRATION

- OPERATIONS  
Offices who contribute data for University-wide tracking
- ACADEMICS  
Colleges who collect and track information about sustainability related courses and research
- AUXILIARY PARTNERS  
Independent units who report data across their operations
- CAMPUS LOCATIONS  
Bothell and Tacoma report in all categories and subcategories on the STARS application



**UW's Seattle, Bothell and Tacoma campuses all report sustainability data**

**50,000+** students enrolled at UW served by 50,000+ staff and more than 4,500 faculty

**More than \$3 billion** endowment fund, fully divested from coal companies

**47** individual contacts from across UW provide STARS information

**77%** UW's STARS score, 4th-highest among all rated schools (as of Jan. 2017)

**76** distinct credit sections on the STARS application within four categories

