

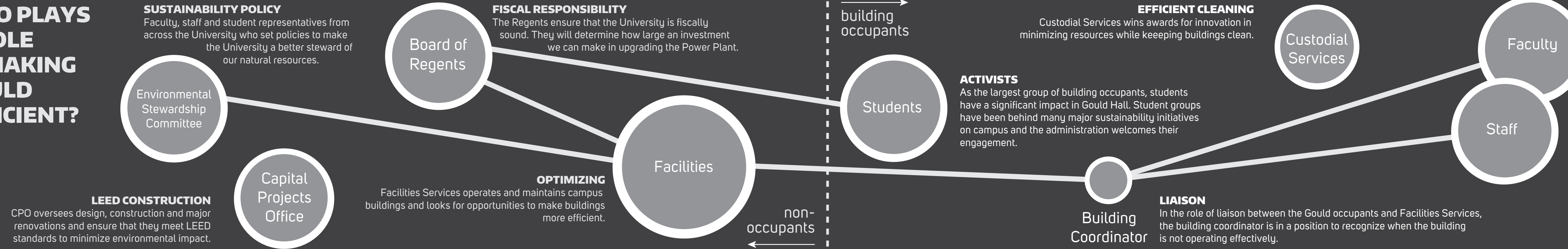
FOREVER GOULD

Understanding how Gould consumes to work toward long-term sustainability

Gould Hall is a space where students and faculty learn to "create just, livable, economically effective, environmentally sound urban regions," "to design landscapes for people and communities, for plants and animals, to support social and natural processes, and to protect human and environmental assets," and establish professional practice aligned with "principals of ethical action to address human and environmental concerns."

What does it take to live up to these ideals in Gould Hall? The diagrams here show ways in which Gould Hall relies on resources extracted from both near and far.

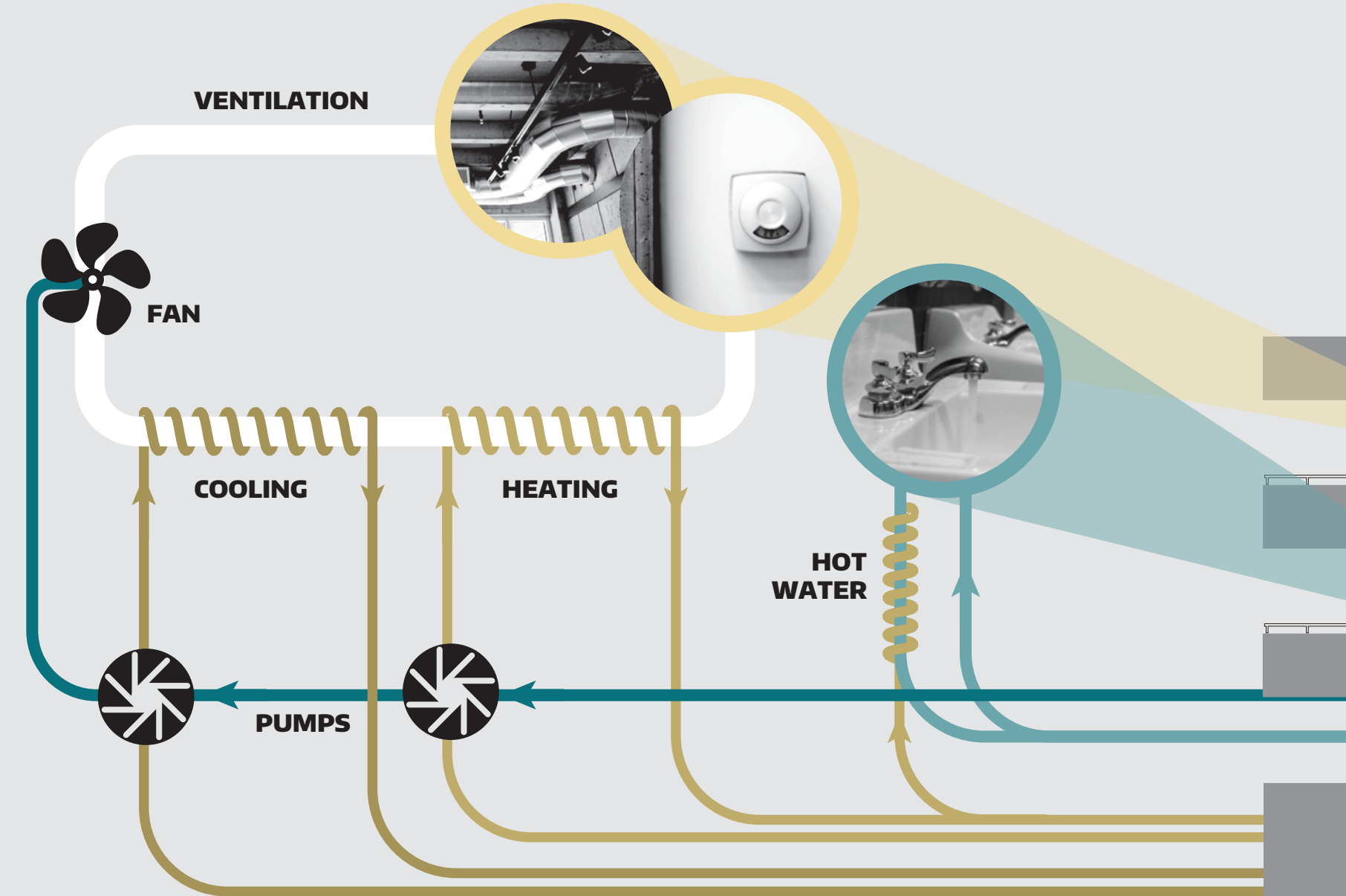
WHO PLAYS A ROLE IN MAKING GOULD EFFICIENT?



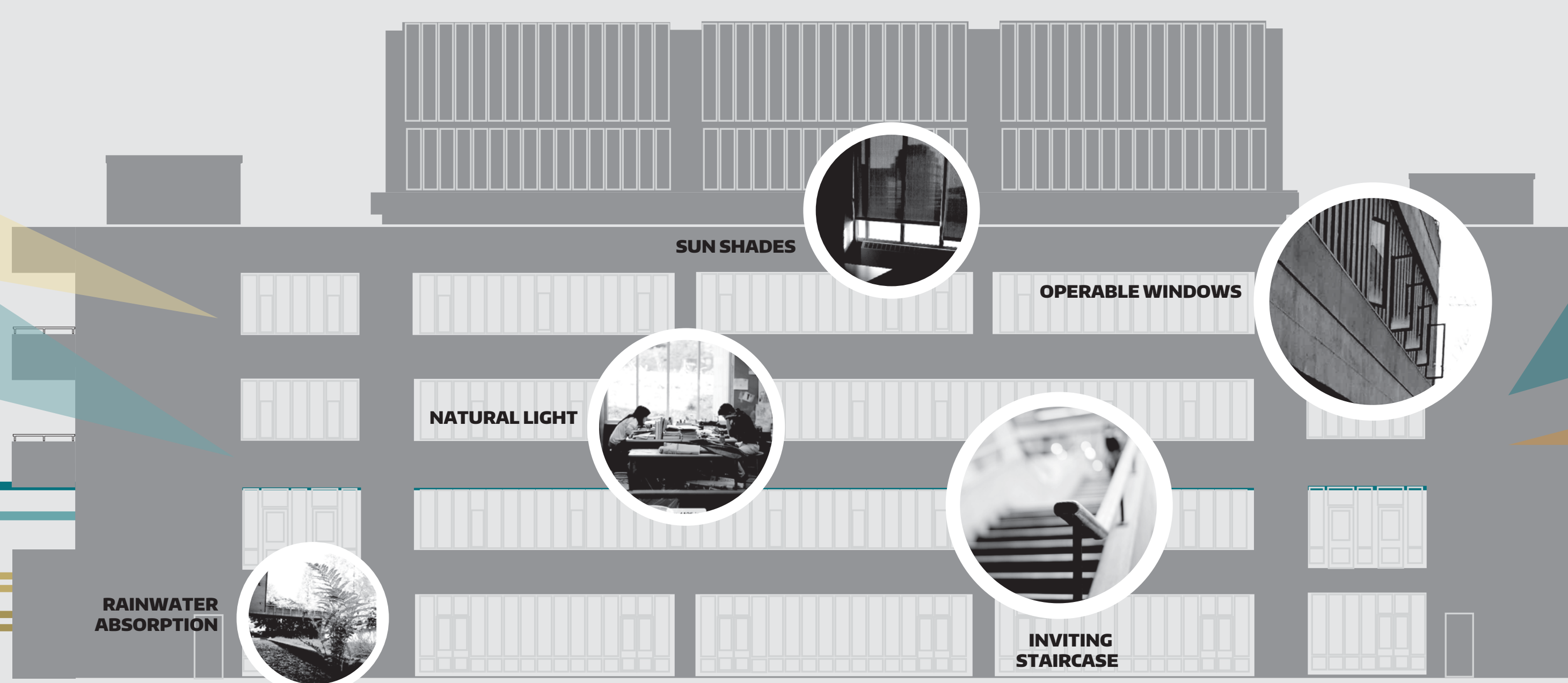
funded through a Green Up partnership between: Seattle City Light & UW Sustainability



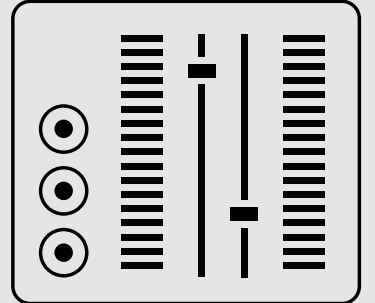
HOW DOES GOULD CONSUME?



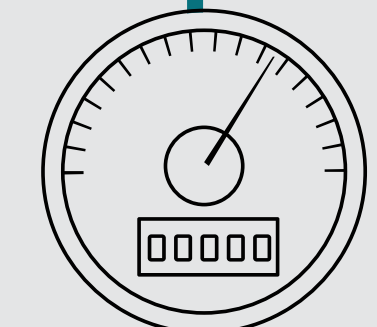
FEATURES THAT REDUCE CONSUMPTION



BUILDING CONTROLS
Settings determine when systems are shut down at night and what temperatures are maintained. Slight adjustments may substantially increase or decrease waste.



MEASURING ELECTRICITY
An electricity meter installed in 2013 allows us to measure the impact of efficiency efforts and may reveal malfunctions.



- ELECTRICITY
- WATER
- WASTEWATER
- STEAM
- CHILLED WATER